



European
GATE VALVES
LIMITED

*robust
accessible
lasting*

Tall Series Double Flap Valves

range of applications

- Temperatures to 1000°C
- Differential pressures to 102 Kpa Where positive below.
- Abrasiveness - Some of the most abrasive materials are comfortably handled
- Lump Size - Depends on valve opening size.
- Openings to 600mm square and 900mm x 450mm in operation

features

- Dual access covers Outboard bearings
- Adjustable packed shaft seals as standard VDMA ISO standard cylinders
- Removable seat and flap with the valve insitu. Regrindable seat and flap All metric standard components

materials of construction

- Valve bodies have been made in Casts Iron, Cast High Nickel Alloys, Cast Aluminium, Fabricated Stainless and Carbon Steels.
- Seats and Flaps are generally made from Cast HiChrome Iron or Stainless Steel
- All other components to suit process conditions to give maximum life and reliability

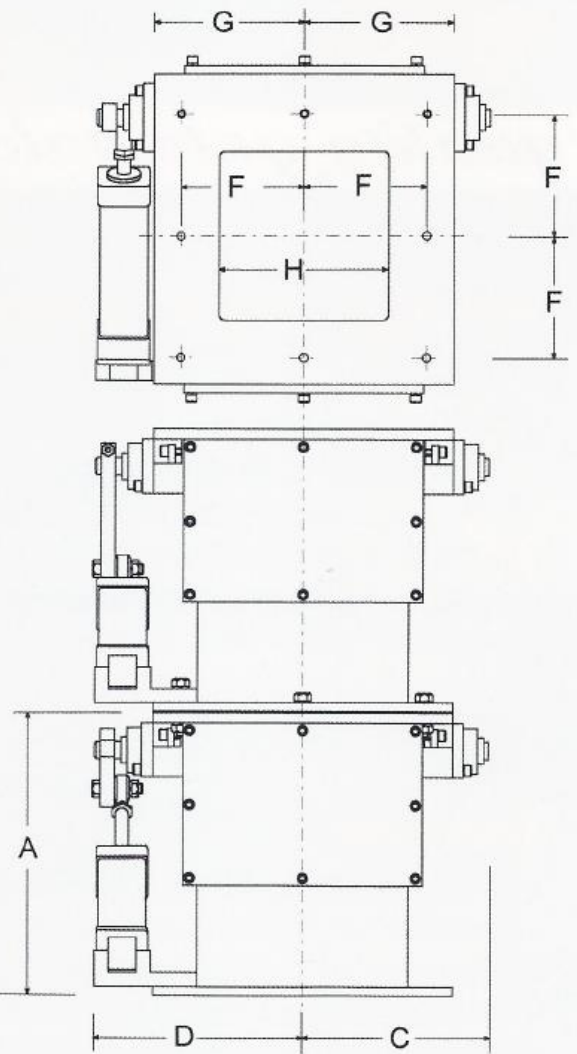
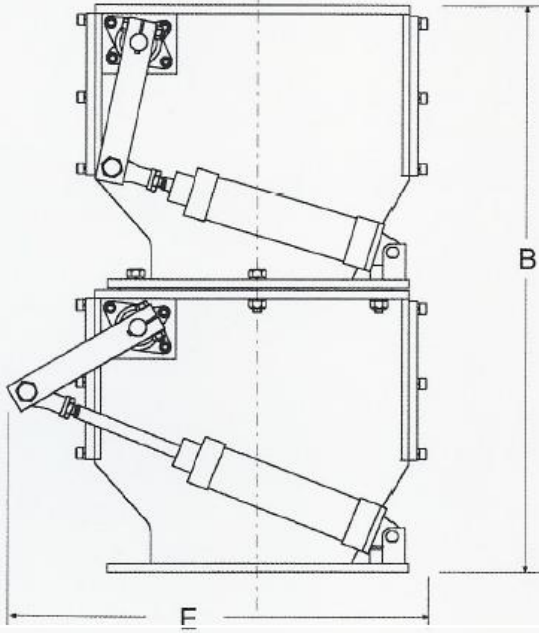
actuation options

- Linear Pneumatic Cylinders
- Rotary Pneumatic Actuators
- Electric motor via cams
- Electric motor via push rods.
- Gravity or Manual. Hydraulic actuators.



SIZE	A	B	C	D	E	F	G	H
150	320	641	185	235	400	120	140	150
200	350	701	225	262	516	150	180	200
250	420	841	276	308	620	180	220	250
300	500	1002	320	390	710	220	250	300
400	720	1442	460	530	1000	200	360	400
600	1000	2002	580	680	1220	225	500	600

(150/200 - 8 HOLES M10) (250 - 8 HOLES M12)
(300 - 8 HOLES M16) (400 - 12 HOLES M20)



optional equipment

Sequence control with Mini-PLC. Flap position indication through shaft mounted contact limit switches, non-contact proximity switches or cylinder mounted reed switches. Heat shields, shaft air cooling and shaft extensions for valve insulation in high temperature applications. Purged high efficiency shaft seals

materials: Aggregate, Alumina Chips, Alternative Fuels, Animal Feed, Asphalt, Broken Glass, Bulk Powder Solids, Carbon Ash, Casting Sand, Cement, Dry Chemicals, Clinker Dust, Coal, Concrete, Crushed Glass, Dust, Fertilizer, Fiberglass, Fly Ash, Foundry Sand, Glass Furnace Dust, Graphite, Gypsum, Kiln Dust, Lead Chips, Metal Shavings, Minerals, Paper, Quarry Dust, Rocks, Silica, Waste Material

CAPACITY		M ³ /hour at 6 cycles per min		AIR CONSUMPTION	
Valve Alone	With Spacer between valves	75mm	100mm 150mm 300mm	150	7.2 litres per min
150	1.7	2.6	2.9	3.4	5.2
200	2.5	3.8	4.2	5.2	7.8
250	4.1	6.2	6.9	8.5	12.9
300	8.3	11.4	12.5	14.6	20.8

Based on air supply at 550kpa and valves operating at 6 cycles/min



European Gate Valves Limited
15 Temple Road, Stowmarket, Suffolk
IP14 1AT, UNITED KINGDOM
Tel +44(0)1902 409590
sales@egatevalves.co.uk
www.egatevalves.co.uk